

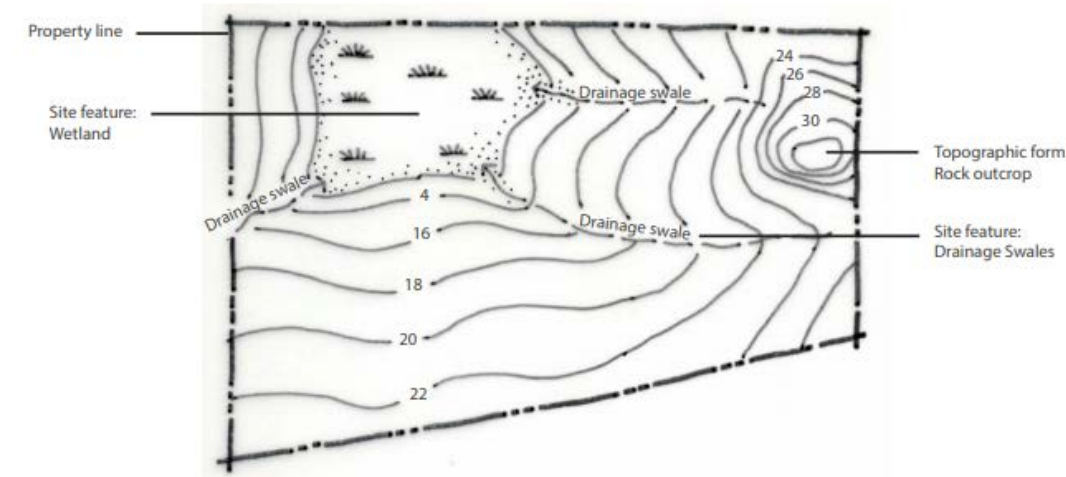
# Park Areas and Natural Assets



## Site Adaptive Planning for Greenfield Sites

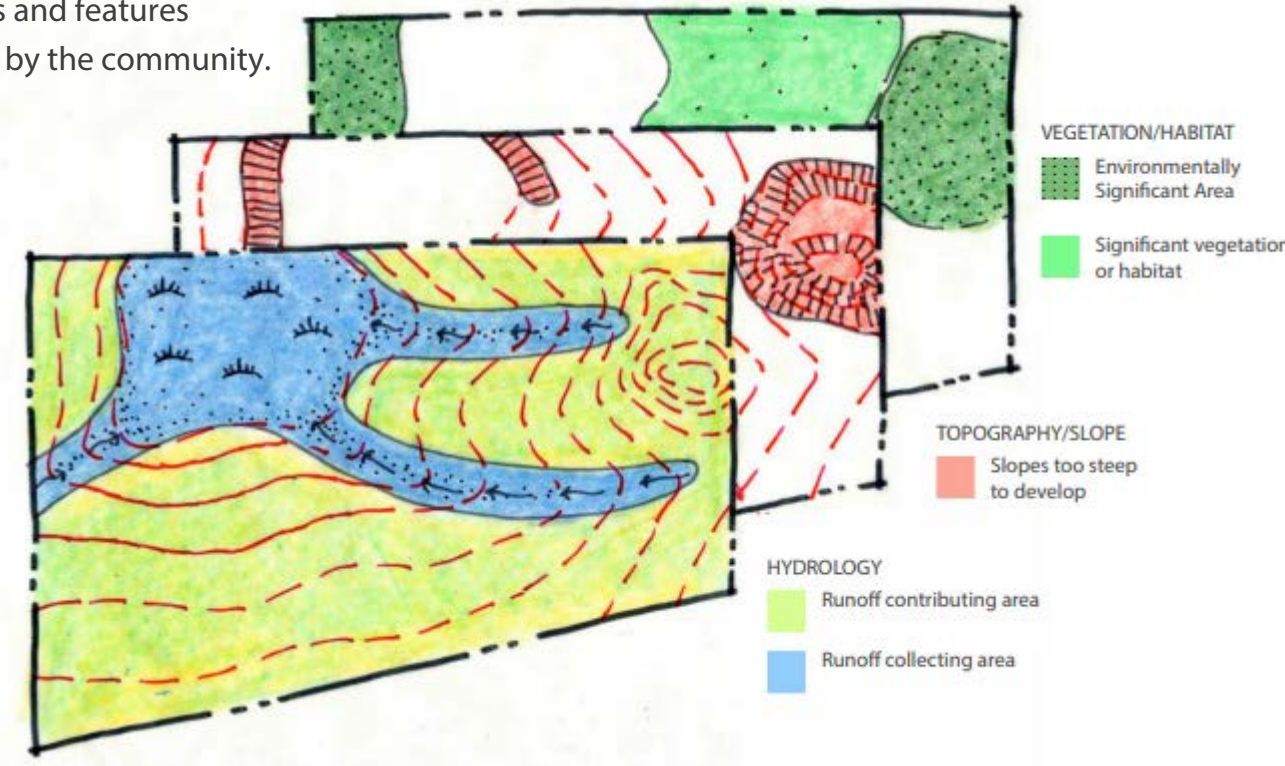
### IDENTIFY FORMATIVE SYSTEMS AND FEATURES

Including runoff, overland flow, stormflow, stream flow and corresponding features like swales, channels, and wetlands.



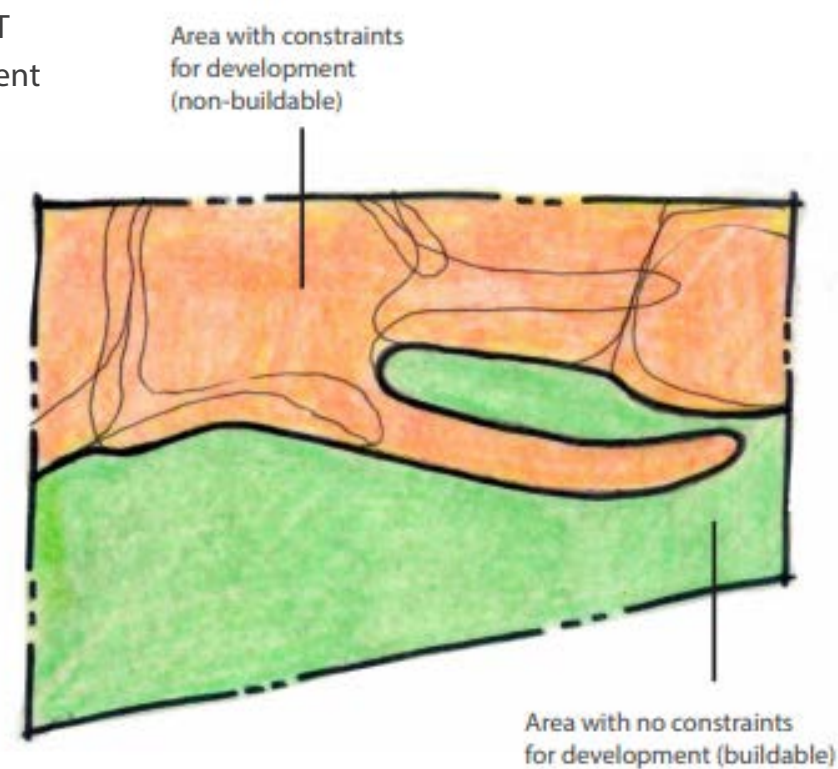
### MAP OUT A SITE ANALYSIS

Provide maps that identify key site forms and features including those earmarked for protection by the community.

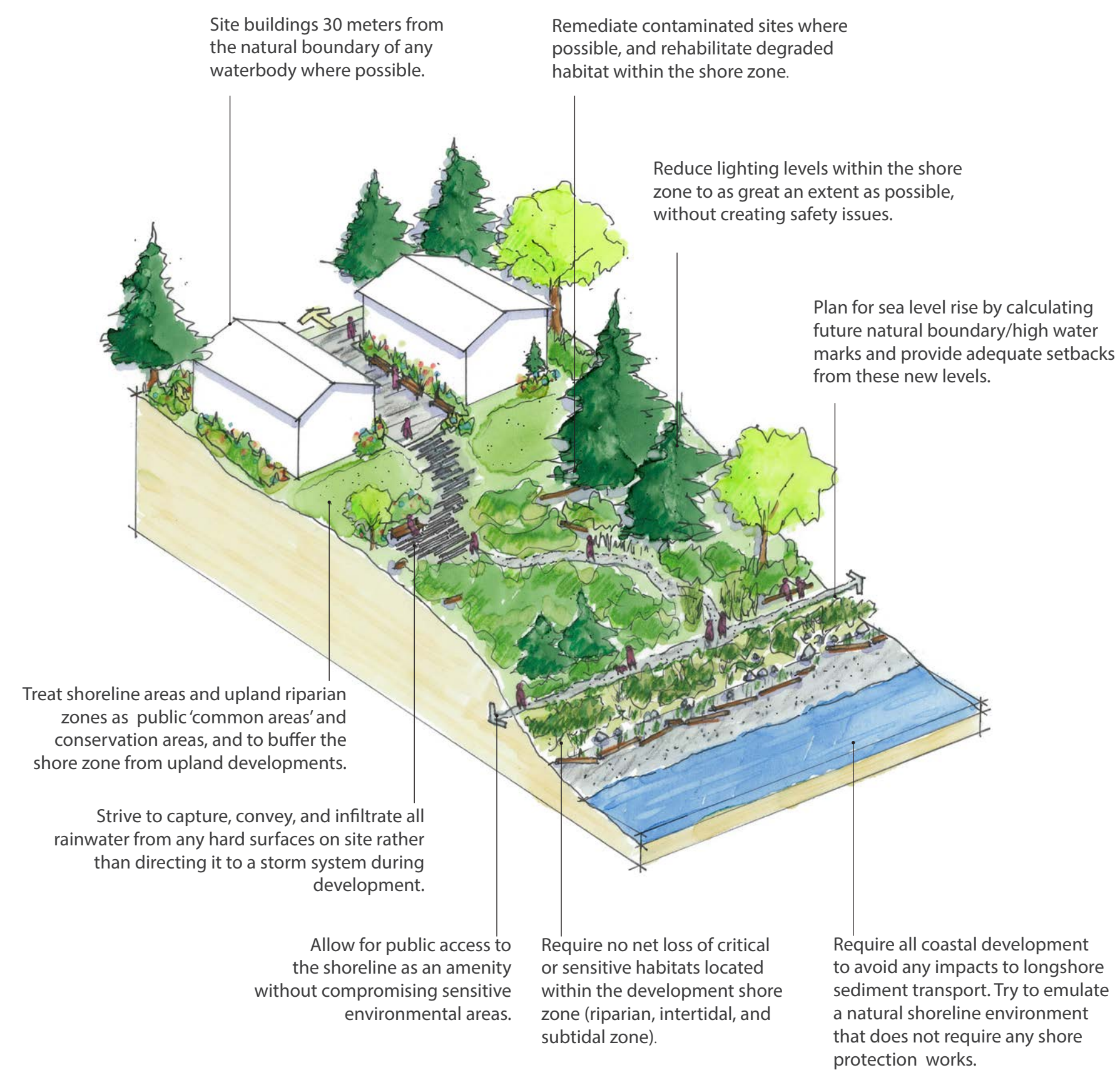


### OUTLINE A FRAMEWORK AND PLAN FOR DEVELOPMENT

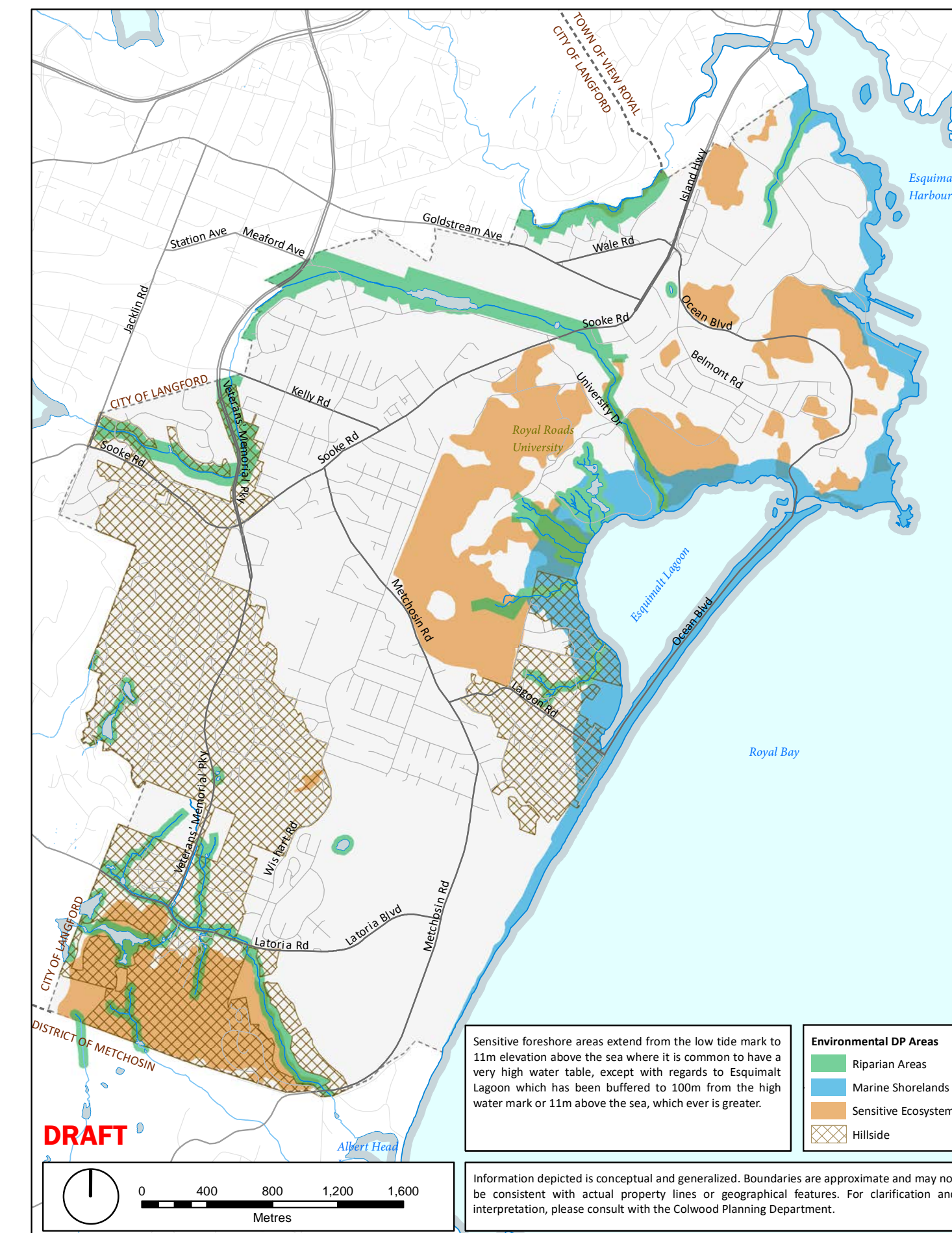
Compare the site analysis with the proposed development program to identify opportunities and constraints.



## Shoreline Protection Measures



## Environmental Development Permit Area Guidelines



Environmental Development Permit Area (EDPA) Guidelines create special requirements for developments in riparian, marine shoreland, sensitive ecosystem, and hillside areas. These areas are shown in the map to the left.

Since protecting Colwood's natural assets were identified as a community priority, the EDPA guidelines have been strengthened in order to protect the natural environment, its ecosystems, and biological diversity. New development must take a site adaptive planning approach.

To review the detailed updated EDPA guidelines, please review Sections 18-22 of the draft OCP available at this event and online at [www.colwood.ca/ocp](http://www.colwood.ca/ocp)