

# Welcome!

*Thank you for coming to learn more about improvements being planned for the Kelly Road area.*

## The purpose of this community open house is to:

- ▶ Inform you about preliminary plans for improvements to Kelly Road.
- ▶ Give you the opportunity to provide input into plans.

## Format for the open house:

- ▶ Review the information presented on the discussion boards.
- ▶ Feel free to ask questions and discuss ideas.



**When you see this icon, please answer the question in your questionnaire.**



# The big picture - Colwood's Transportation Master Plan

## **Transportation Plan = Community Input + Current Travel Analysis + Transportation Projections**

The City gathered public input into the plan through open houses, workshops, speakers, surveys, newsletters, City meetings, the City website and social media.

Here are some highlights of participant feedback from the April 23, 2014 event called "What's the Plan for Your Street?"

- ▶ **What are your highest priorities for the Transportation Master Plan?**  
1. Safe and Connected Major Roads 2. Walkable Community 3. Livable Neighbourhoods
- ▶ **How should the City plan to accommodate future growth in travel within the City?**  
82% feel the City should focus on promoting sustainable transportation instead of expanding the road network
- ▶ **Where should the City prioritize new sidewalks?**  
Schools were by far the highest priority for new sidewalks, followed by bus stops and all streets in vibrant centres
- ▶ **What type of cycling routes do you prefer?**  
Bicycle lanes, buffered bicycle lanes and multi-use pathways are the most preferred types of facilities



# Why Kelly Road?



Funding has been budgeted for improvements to Kelly Road for several reasons:

- ▶ It is an important gateway into our Colwood community.
- ▶ It connects the neighbourhood to businesses at Sooke and Kelly Roads
- ▶ Ensuring safety for all travel modes along the route is a priority, particularly near the popular park.
- ▶ The area provides a connection from the Galloping Goose trail through Metchosin Road to the Wishart neighbourhood.
- ▶ As a central area of Colwood, it has the potential to grow and flourish over time.

**? What land use do you envision along Kelly Road 10 years from now?**

# What improvements are being considered?

At a recent City Hall meeting, several members of the community shared their thoughts about preliminary plans, expressing the need for more discussion around:

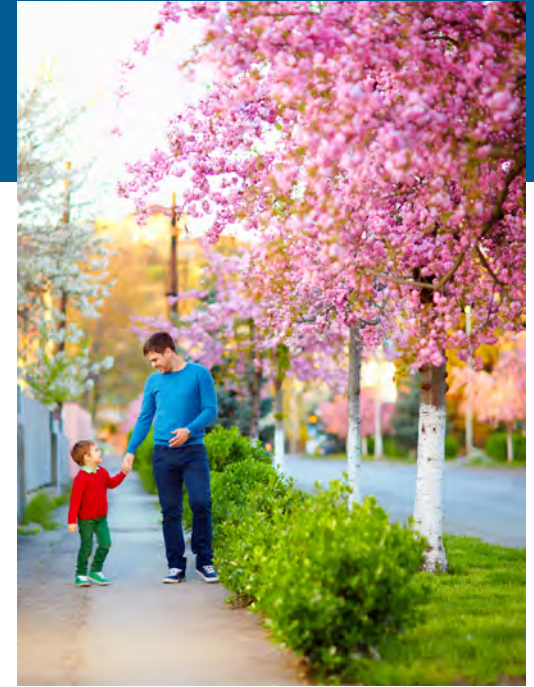
- ▶ What portion of Kelly Road is included in upgrade plans
- ▶ Whether on-street parking is important on Kelly Road
- ▶ The possibility of extending the sewer line prior to road improvements
- ▶ Ensuring safety and accessibility at bus stops and park entrances
- ▶ Ideas for traffic calming and redirecting traffic
- ▶ Assessing what improvements can be funded currently and what could be planned for future phases
- ▶ Ensuring the community is informed and has the opportunity to provide input



**?** What are your top 3 priorities on this list of improvement options?

# *Safe and enjoyable places to walk*

- ▶ Sidewalks with raised curbs
- ▶ Pedestrians separated from vehicle traffic
- ▶ Crosswalks that are safe and highly visible
- ▶ Curb letdowns for strollers, bikes, scooters and wheelchairs
- ▶ Designated bike lanes, separate from pedestrian walkways
- ▶ Safe and accessible bus stops and park entrances
- ▶ Landscaping that beautifies the area, manages storm water, improves air quality, provides shade in summer and allows light in during winter months



?

**Do you agree that these improvements will make Kelly Road more walkable?  
What other suggestions do you have?**

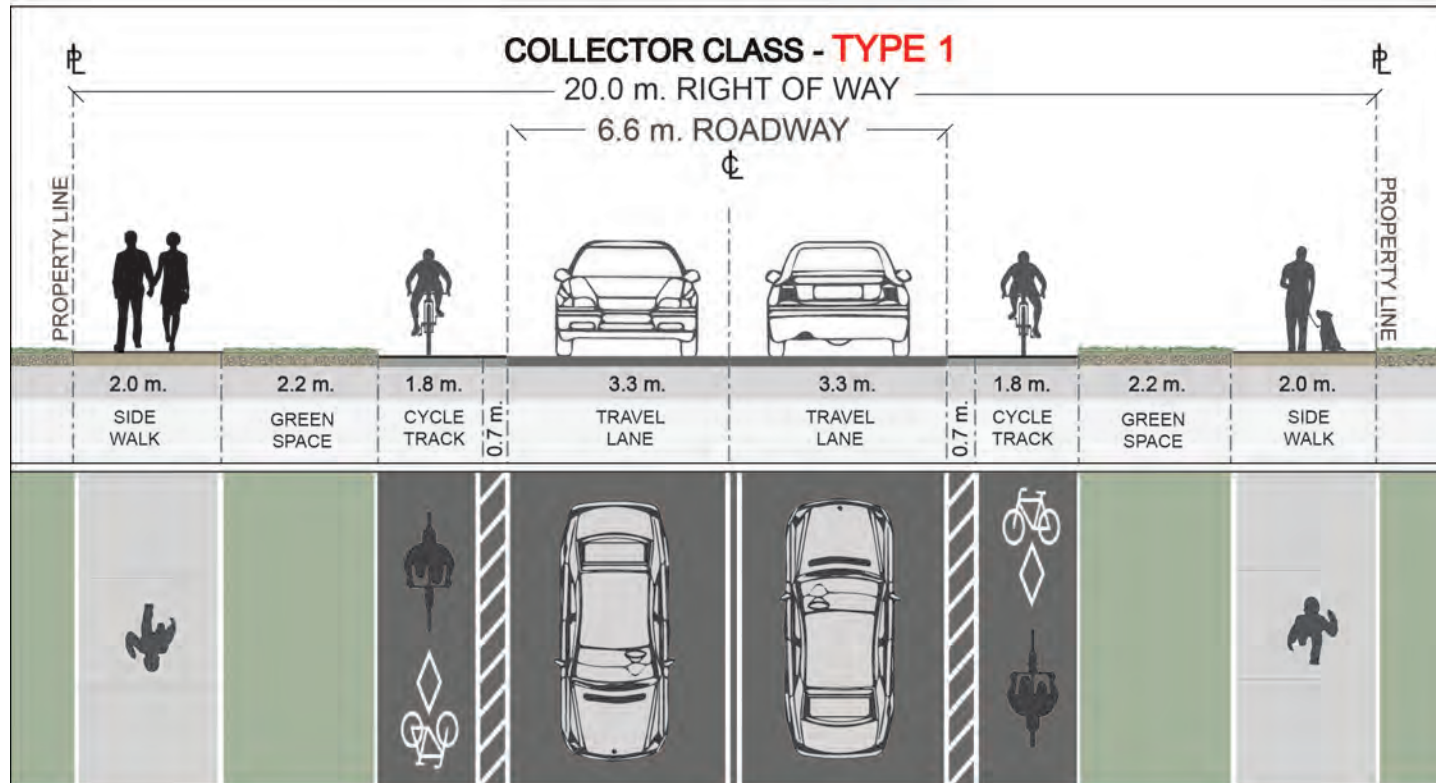
# *Safe and comfortable* bike lanes



- ▶ Buffered bike lanes
- ▶ Keep bikes safely separated from traffic
- ▶ Design cycling lanes around bus stops
- ▶ Provide convenient connections between neighbourhoods
- ▶ Provide connection to the Galloping Goose Trail
- ▶ Add wayfinding signs to identify cycling routes and trail connections

**?** Do you agree that these improvements will make Kelly Road more cycling friendly?  
What other suggestions to you have for cycling improvements?

# A place for everyone - Proposed road cross section





# *Convenient and accessible* transit options

- ▶ Bus stops designed for all levels of mobility
- ▶ Comfortable, well-lit bus shelters
- ▶ Partnership with BC Transit to assess transit needs and frequency
- ▶ Buses and cyclists share the lane at bus pull outs



**?** Do you agree that these changes will encourage you to use transit more often?  
What keeps you from using transit? What would encourage you to use it more?



# Safe access to Herm Williams Park

- ▶ Safest placement for parking area
- ▶ Safe and convenient placement of transit stop near park entrance
- ▶ Maintain easy walking access from all sides of the park
- ▶ Provision of on-street parking near Herm Williams Park
- ▶ Safest placement for handicapped parking area



**?** Do you agree that these changes would improve safety for park visitors?  
What other suggestions do you have for improving safe access to the park?

# Assessing *on-street parking* needs

- ▶ Importance for residents and their visitors
- ▶ Importance for home based businesses
- ▶ Ensuring safe design for pedestrians and cyclists
- ▶ Ensuring safety at park entrances
- ▶ Benefits of a parking buffer between traffic and pedestrians
- ▶ Parking pockets provide visual traffic calming benefits



?

**Do you agree that it is important to have on-street parking on Kelly Road?**

**Do you use on street parking on Kelly Road?**

# Landscaping *that welcomes you*

- ▶ Landscaped areas next to sidewalks, with trees and flowers
- ▶ Boulevard sections with landscaping
- ▶ Plantings designed to manage stormwater and improve air quality
- ▶ Benches to encourage people to stop and chat
- ▶ Opportunities for public art to bring a new character to the area



**?** Do you agree that landscaping would create a more welcoming entrance to Colwood?  
What types of trees would you like to see along the street?  
Would you like to see public art in the area? What ideas do you have for public art?

# *Extending sewer service along Kelly Road*



- ▶ Adding sewer infrastructure is not funded with the budget of this project
- ▶ Staff are developing options for funding extension of the sewer system.
- ▶ Adding sewer infrastructure on Kelly Road at the same time as transportation improvements could create efficiencies.
- ▶ Homes in the area are on septic systems, which have an average life span of about 40 years and a replacement cost of between \$30K and \$40K.
- ▶ The typical cost for a 4" residential sewer connection to the property line is \$9,100
- ▶ Residents not on Kelly Road who wanted to connect to sewers would need to follow the petition process to engage neighbours in setting up a Local Service Area.

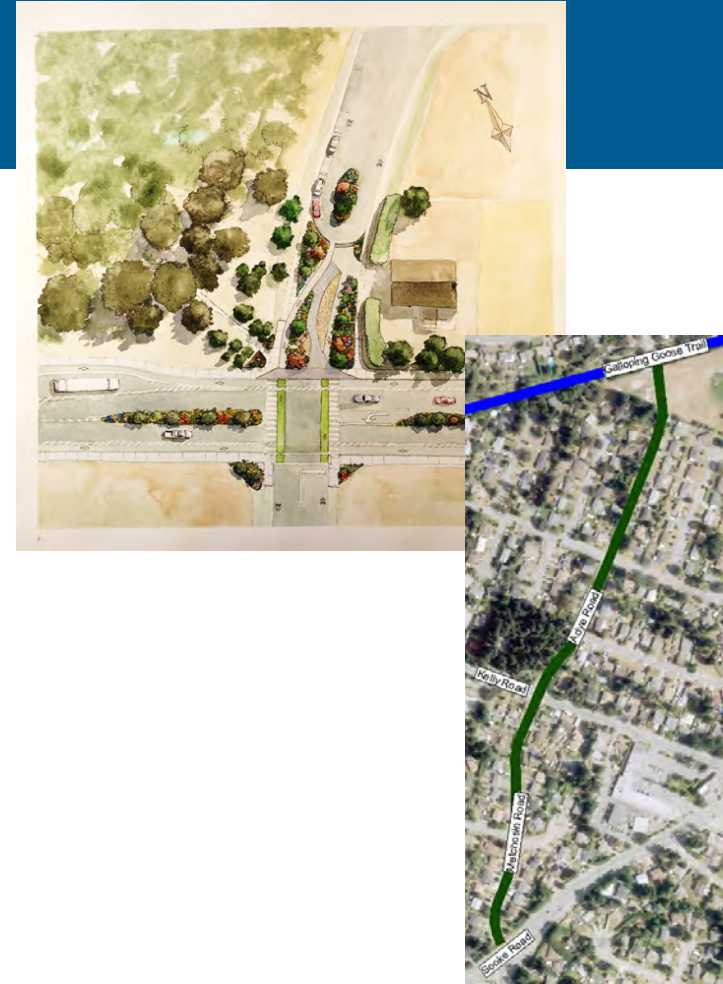
?

**Would you like to see sewers extended along Kelly Road?**

**If you live on Kelly Road, would you connect to a new sewer line?**

# Envisioning *Adye Green*

- ▶ Adye Road provides a natural 'greenway' - a cycling route from the Galloping Goose through to Metchosin Road
- ▶ Closing the Kelly Road entrance to Adye Road would improve safety by reducing the number vehicles using Adye Road
- ▶ The traffic light at Mount View would be adjusted to better accomodate neighbourhood traffic
- ▶ A greenspace would enhance the area



**?** Do you agree with the idea of redirecting traffic on Adye Road?



# Funding improvements along Kelly Road

The current budget allocation for Kelly Road Improvements is \$785K.

This amount will not allow for all the desired improvements, so the project may need to be completed in phases.

## Current funding available

- ▶ \$710K budget from Federal Gas Tax
- ▶ \$75K grant from CRD Regional Cycling and Pedestrian Master Plan

## Funding options for future phases

- ▶ Federal Gas Tax funding
- ▶ Additional grants
- ▶ Sewer fees
- ▶ Contributions from new developments
- ▶ Property Taxes

**? What funding options do you support for Kelly Road improvements?**

# Concept drawing - Colwood boundary to Pickford Road





# Concept drawing - Pickford Road to Adye Road



# Concept drawing - Adye Road to Sooke Road





# Next Steps and *thank you!*



- ▶ Your input will be summarized along with supporting research and presented to Colwood Council early in September.
- ▶ Council will make decisions about the scope and timing of the project.
- ▶ The summary report and Council decisions will be reported on the City website and shared through other distribution channels.



## *Connect with Colwood*

- ▶ *Contact us* anytime at 250-478-5999
- ▶ *Browse* the City website at [Colwood.ca](http://Colwood.ca)
- ▶ *Subscribe* for email updates at [www.colwood.ca/subscribe](http://www.colwood.ca/subscribe)
- ▶ *Follow* CityofColwood on facebook and twitter

