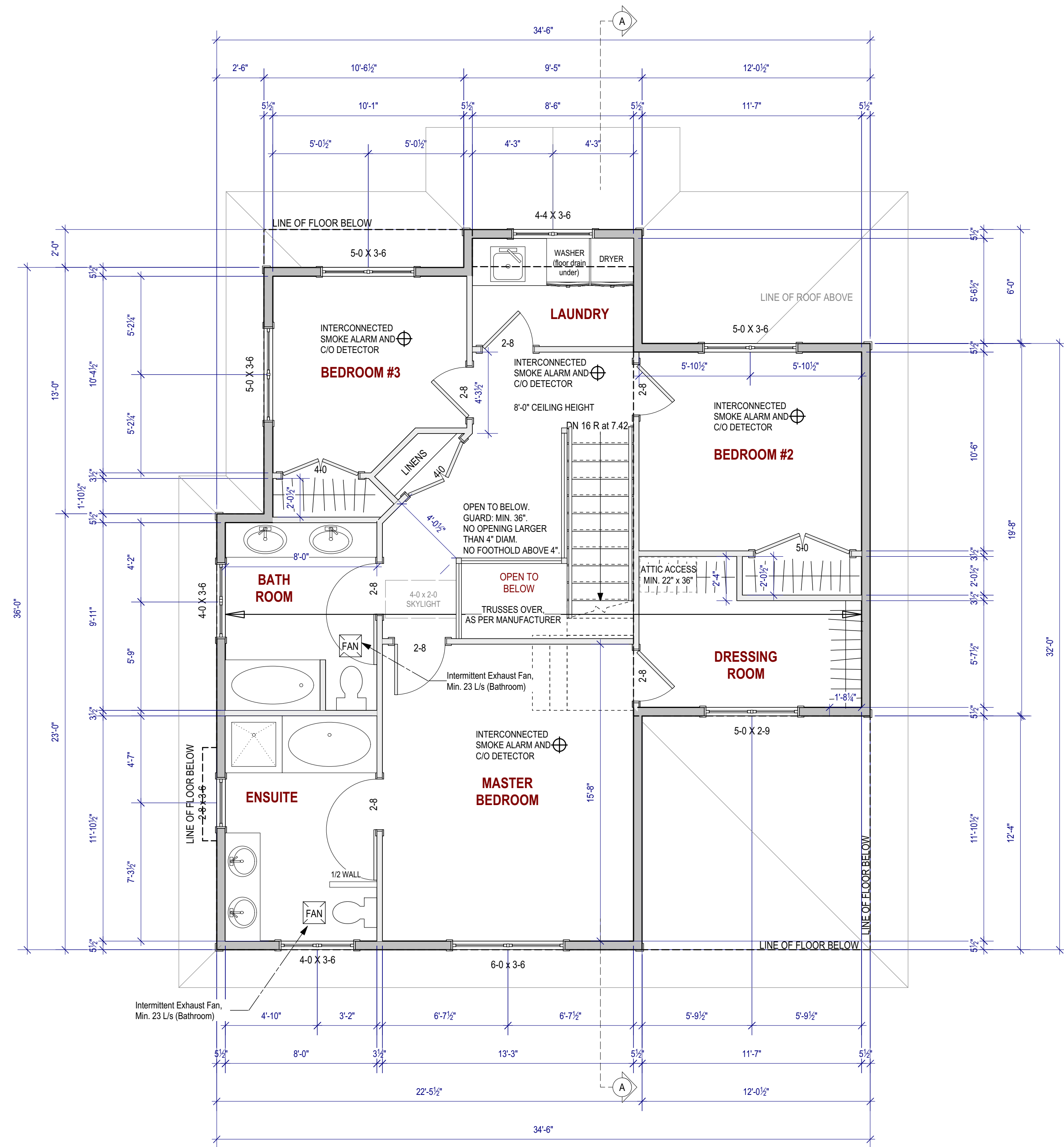
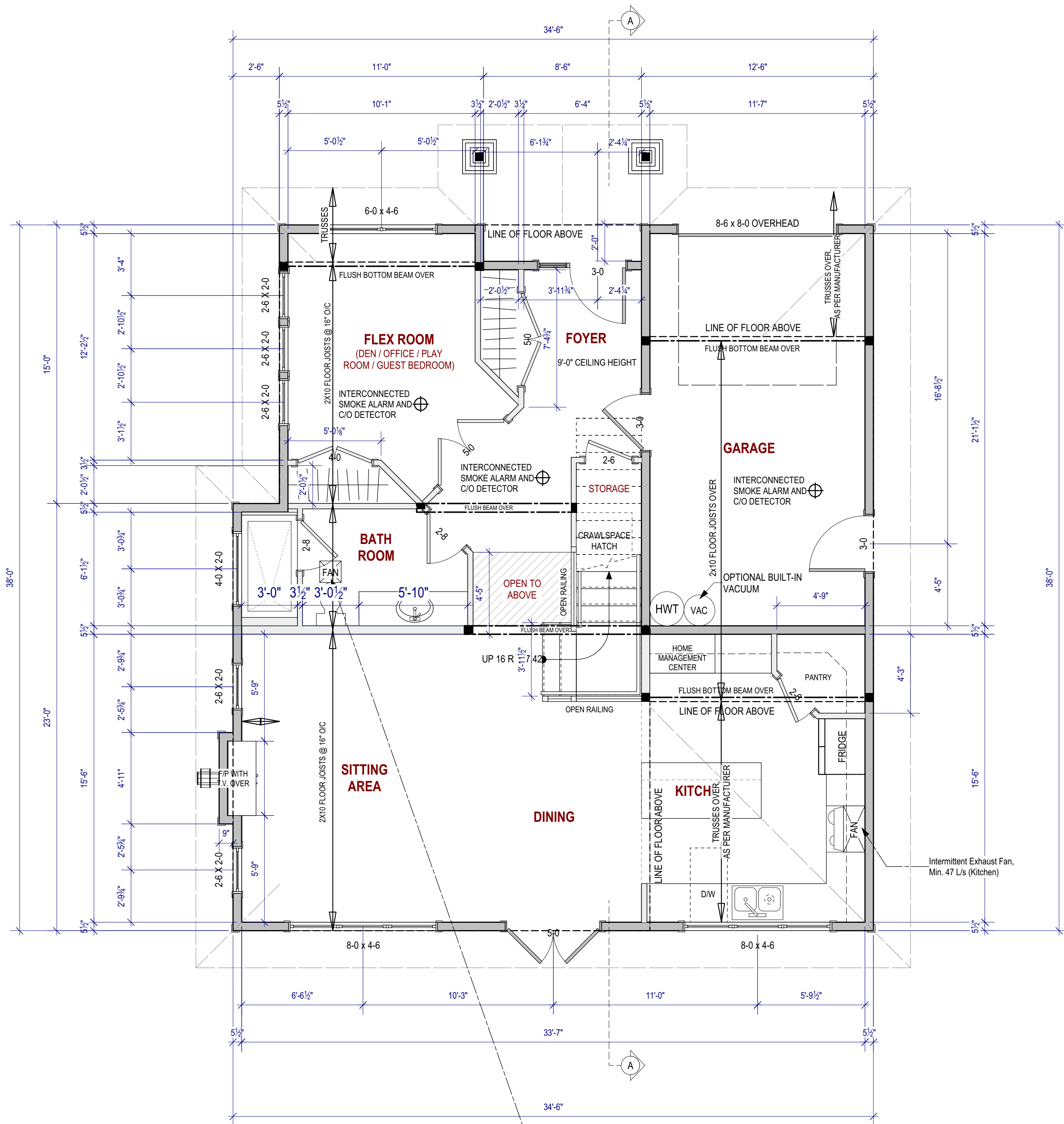


# Floor Plans

WALL LEGEND:	
3 1/2" Interior walls:	
5 1/2" Exterior & Interior Bearing or plumbing walls:	
8" Concrete foundation on 16" x 8" footing:	
5 1/2" pony wall on 16" x 8" footing:	



PRINCIPAL EXHAUST FAN (14 L/s), DESIGNED TO RUN CONTINUOUSLY. ON/OFF SWITCH LOCATED SO THAT IT WILL NOT INADVERTANTLY BE SWITCHED OFF.

IF FAN IS DESIGNED TO RUN AT MULTIPLE FLOW RATES, AIR FLOW IS TO BE CONTROLLED BY A SWITCH OTHER THAN THE MAIN ON/OFF SWITCH AND THE LOWEST AIR FLOW RATE IS TO BE NO LESS THAN 14 L/s. UPPER LEVEL FLOW RATE TO BE 23L/s AS IT WOULD BE DOUBLING AS A BATHROOM FAN.

SEE B.C.B.C. 9.2.3.5 AND 9.2.3.6

1234 COLWOOD DRIVE COLWOOD, B.C.	DWG NO:	3 OF 5	DESIGN BY:	Colwood, B.C.
	DATE:		DRAWN BY:	