

Working Paper no.2

Major Road Network Scenarios

Consistent with the conclusions of *Working Paper no. 1*, two major street network scenarios are being given further consideration for south Colwood. These include comprehensive widening on Latoria Road (Scenario 2d) and comprehensive widening on Metchosin Road (Scenario 2c). Each scenario reflects the ultimate buildout of south Colwood, representing a community-wide population of approximately 41,000 and anticipated to take 30-40 years to realize.

The following describes the package of major road network improvements associated with each major street network scenario. Importantly, this includes a series of improvements that are planned to be carried out under either scenario, as well as the corridor and supporting network improvements specific to each. Conceptual diagrams for each scenario are included on the following pages.

Shared Network Improvements

The following network improvements are proposed under either major street network scenarios:

- Veterans Memorial Parkway expanded to four lanes along the entire length;
- Sooke Road expanded to four lanes from Metchosin Road through Veterans Memorial Parkway (and to Jacklin Road via Highway 14);
- The connection of Allandale Road between Veterans Memorial Parkway and Wishart Road, as well as with minor road connection to Metchosin Road; and
- Widening Metchosin Road to four lanes between Sooke Road and Wishart Road.

Scenario 2d. Latoria Road Corridor Widening

In addition to the shared network improvements listed above, the following improvements are the focus of Scenario 2d:

- Latoria Road expanded to four lanes between Ryder Hesjedal Way and Veterans Memorial Parkway (in addition to existing four-lane section at Metchosin Road);
- New traffic signals on Latoria Road at the Wishart Road and Bezanton Way intersections;
- New traffic signals on Metchosin Road at the Lagoon Road and Painter Road intersections;

- New left turn lanes on Metchosin Road at the Cotlow Road, Hatley Drive and Benhomer Drive intersections; and
- Potential centre turn lanes on Metchosin Road for the section between Cotlow Road and Painter Road to facilitate left-turns into driveways, with consideration for centre turn lanes on the remainder of Metchosin Road between Latoria Road and Wishart Road.

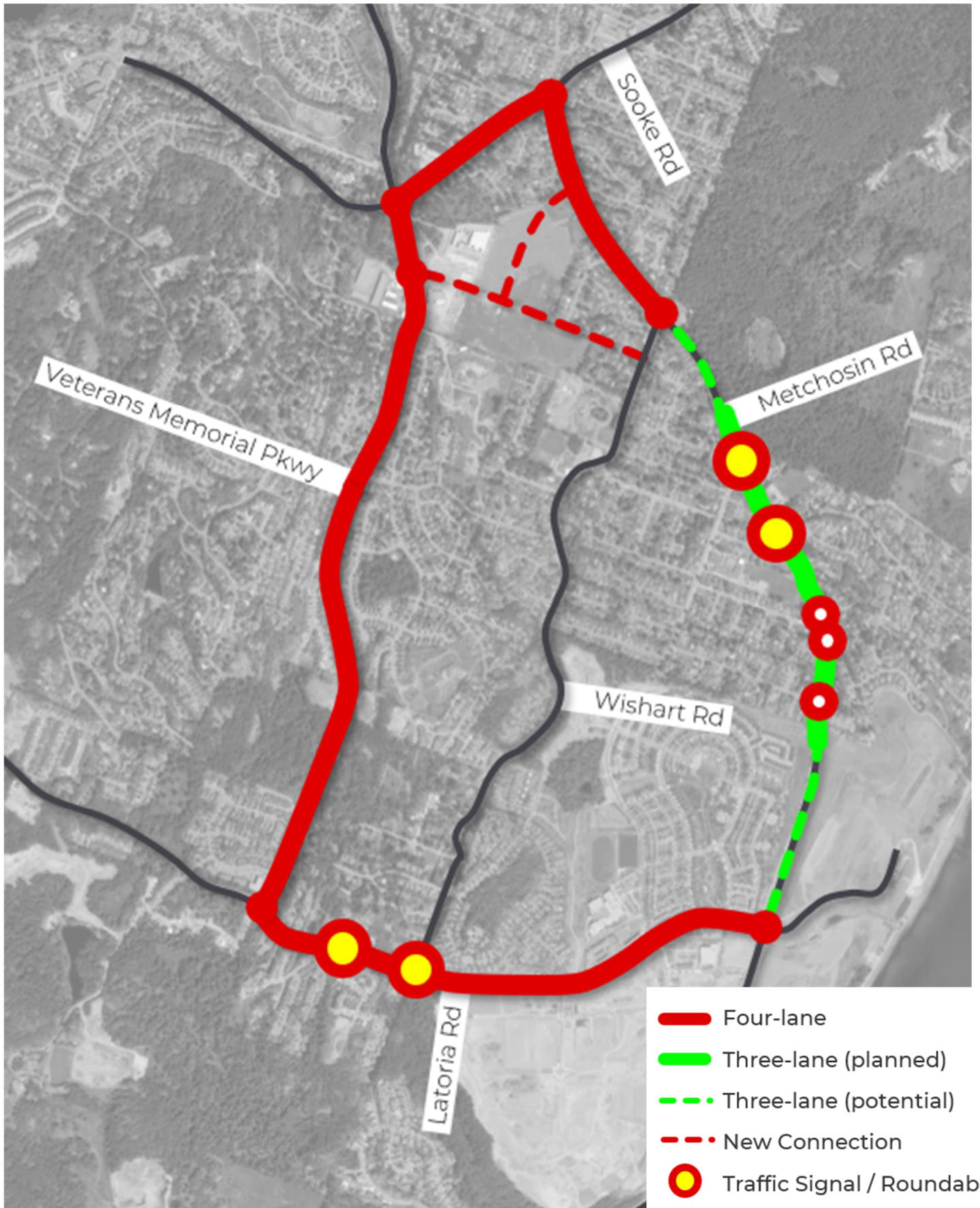
Scenario 2c. Metchosin Road Corridor Widening

In addition to the shared network improvements listed above, the following improvements are the focus of Scenario 2c:

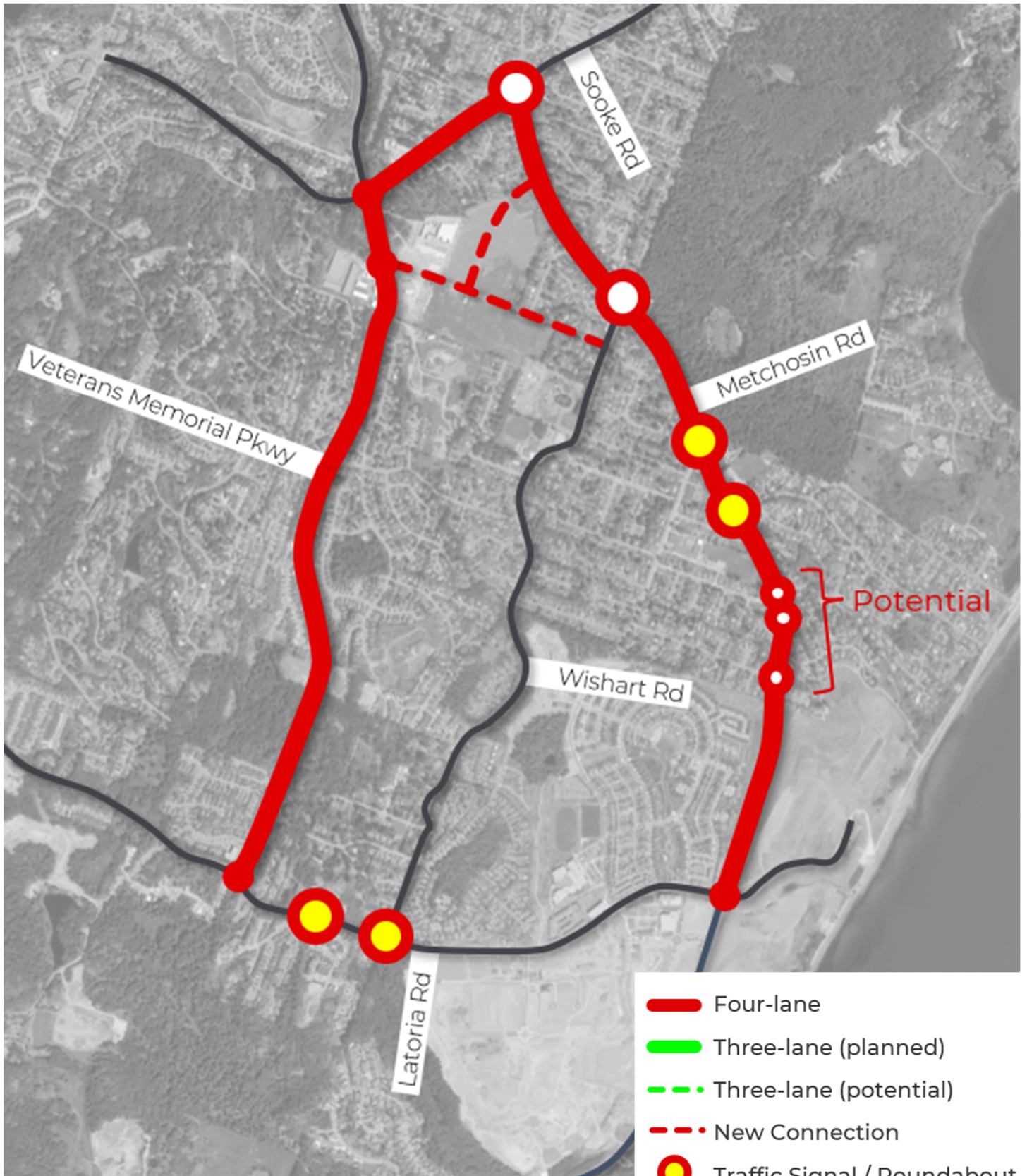
- Metchosin Road expanded to four lanes between Latoria Road and Wishart Road (in addition to planned four-lane section between Wishart Road and Sooke Road);
- Dual left turn lanes and/or major intersection upgrades on Metchosin Road at the Wishart Road and Sooke Road intersections; and
- New traffic signals on Latoria Road at the Wishart Road and Bezanton Way intersections.

Scenario 2d.

Latoria Road Corridor Widening



Scenario 2c.
Metchosin Road Corridor Widening



- Four-lane
- Three-lane (planned)
- - - Three-lane (potential)
- - - New Connection
- Traffic Signal / Roundabout
- Additional Left Turn Lane
- New Turn Lane