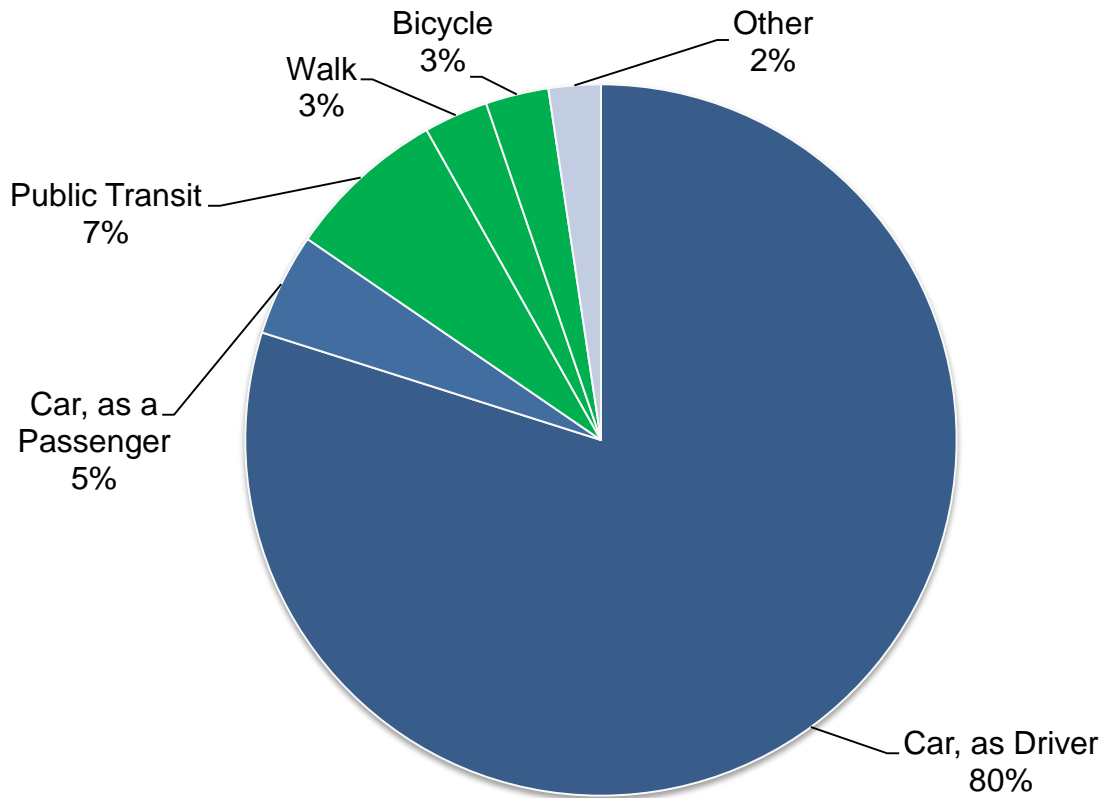


Transportation Master Plan



How Do People Travel in Colwood?



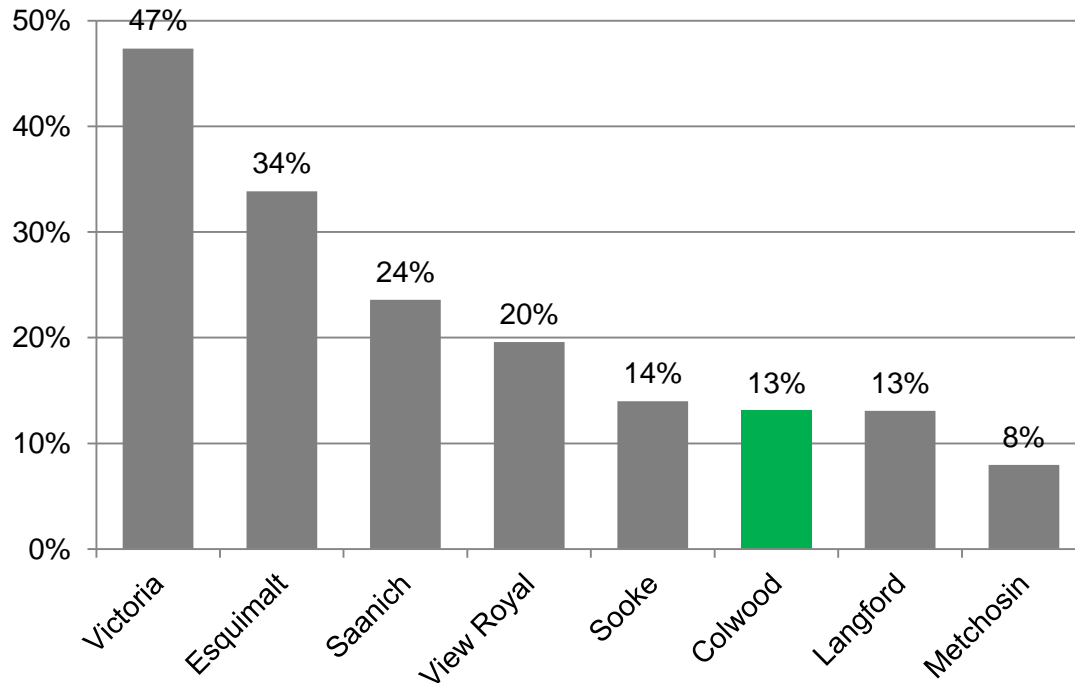
- **Majority of commute trips by Colwood residents (85%) are made by private vehicle, either as driver or passenger**
- **7% by transit**
- **6% by active modes**

2011 National Household Survey: **Commute Trips**



How Do People Travel in Colwood?

2011 National Household Survey: **Commute Trips**

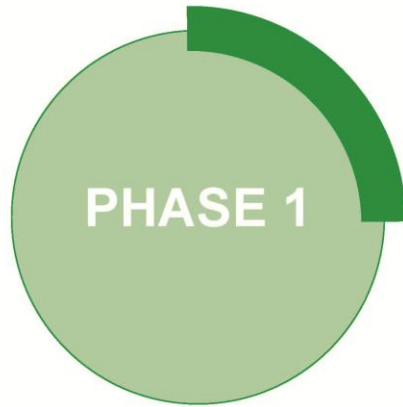


Throughout the CRD:

- 13% of commute trips in Colwood are made by walking, cycling, and transit
- This is comparable trend to many other West Shore communities



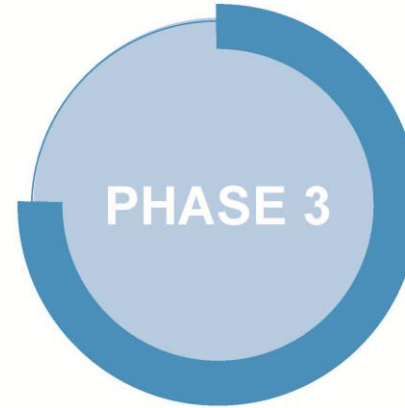
Plan Process



- Build community awareness
- Identify community concerns and aspirations
- Develop a shared vision, goals and targets for transportation in Colwood



- Understand existing conditions for walking, cycling, transit and automobile use
- Identify issues and opportunities
- Confirm what's needed to achieve goals and targets



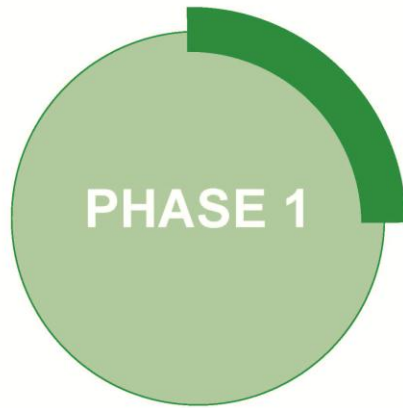
- Forecast growth
- Prepare travel projections
- Identify the gaps for each mode
- Confirm long-term plans



- Assess and prioritize projects
- Prepare cost estimates
- Develop phasing plan
- Create monitoring plan



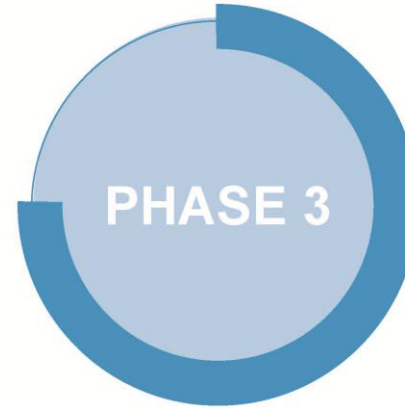
Plan Process



- Build community awareness
- Identify community concerns and aspirations
- Develop a shared vision, goals and targets for transportation in Colwood



- Understand existing conditions for walking, cycling, transit and automobile use
- Identify issues and opportunities
- Confirm what's needed to achieve goals and targets



- Forecast growth
- Prepare travel projections
- Identify the gaps for each mode
- Confirm long-term plans



- Assess and prioritize projects
- Prepare cost estimates
- Develop phasing plan
- Create monitoring plan



We are here



Plan Components

What will be included in the plan?

- A long-term transportation **vision** for Colwood
- **Goals and objectives** that support the vision
- **Plans for each mode** of transportation
- Short, medium, and long-term **priorities** for implementation purposes



Plan Components



Road Network
Plan



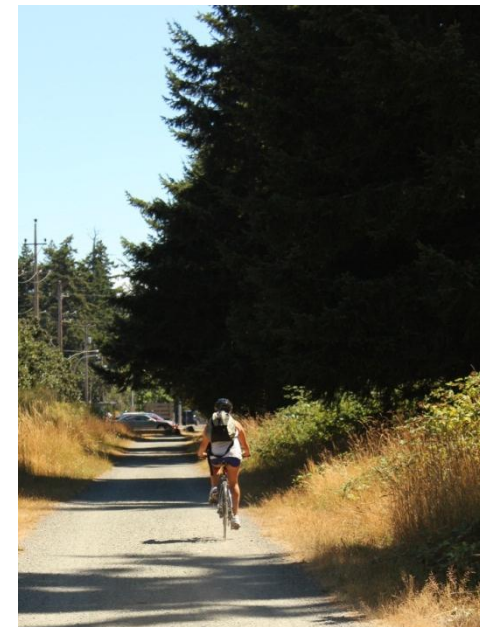
Transit
Strategy



Pedestrian
Plan



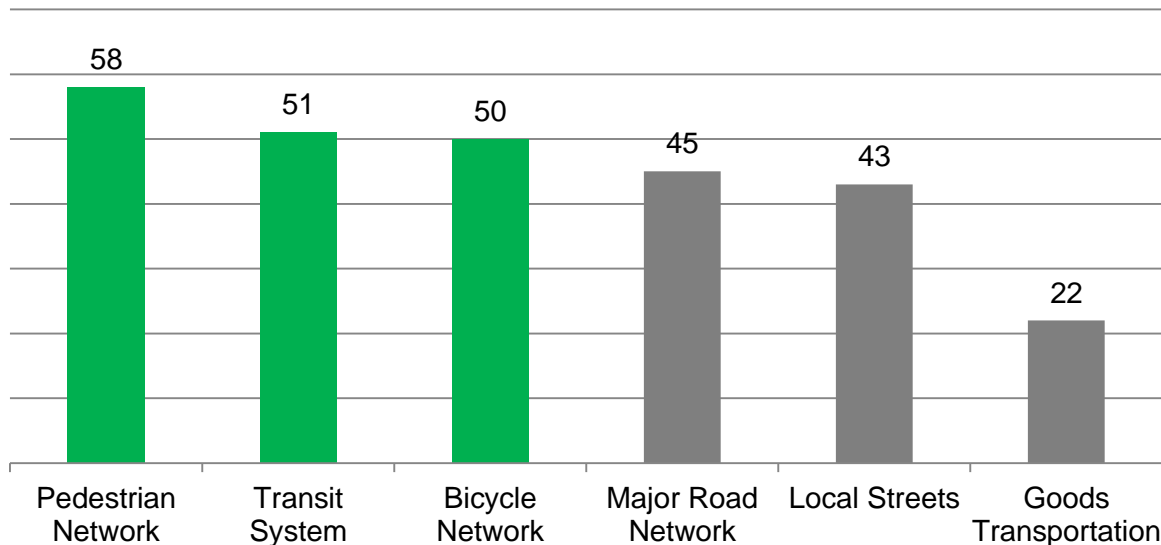
Bicycle
Network Plan



Communication & Engagement



Transportation Priorities

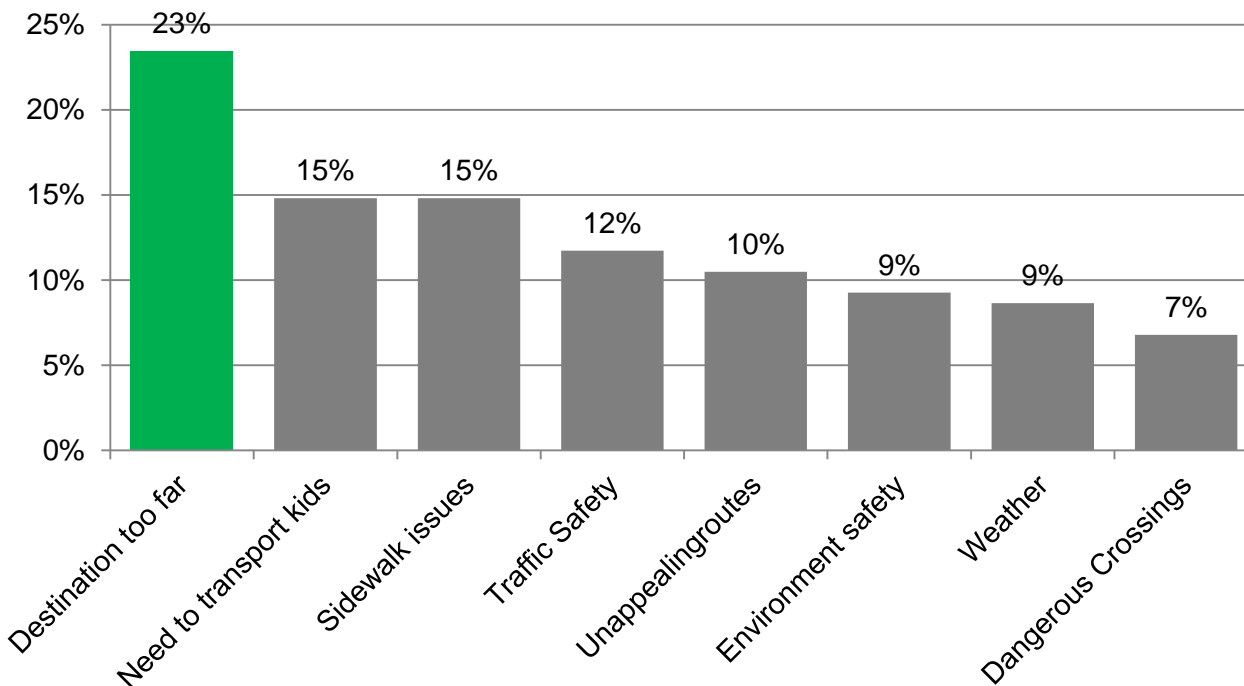


- Pedestrian network identified as the top priority
- Followed by transit and bicycle network priorities
- Goods movement not identified as high a priority



Barriers to Walking

What Factors Discourage Walking?

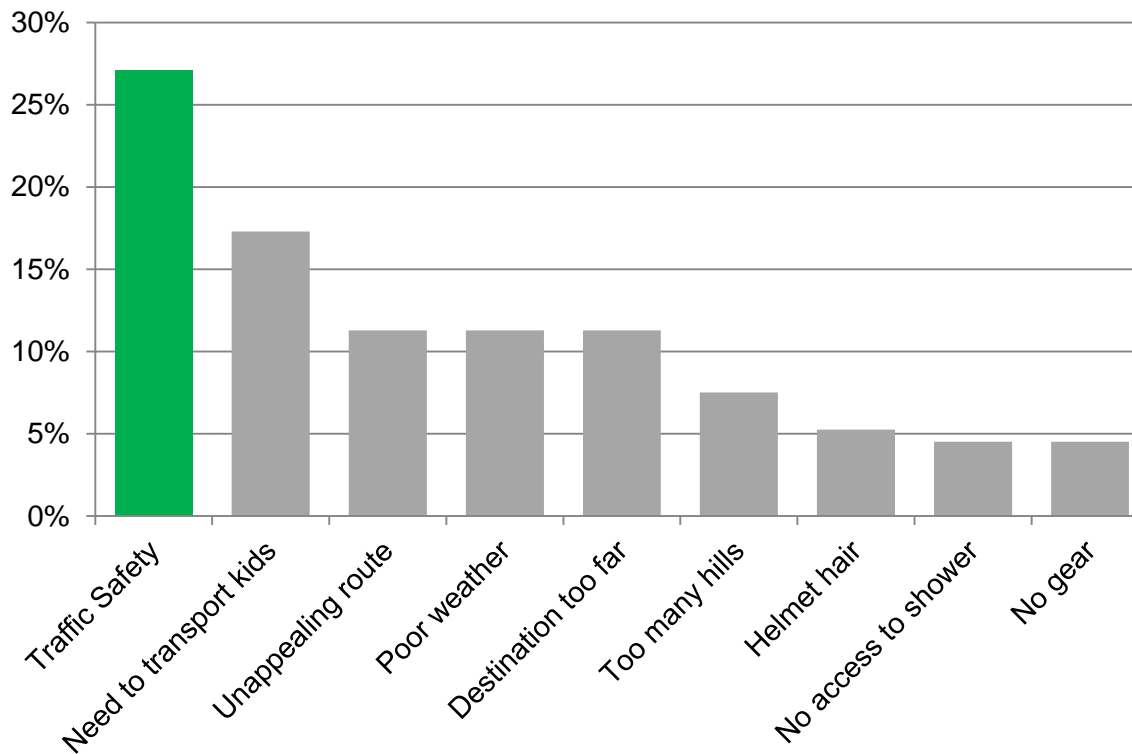


- Destinations located far apart seen as key deterrent to walking in Colwood
- Transporting children, and sidewalk issues/gaps identified as other main deterrents to walking



Barriers to Cycling

What Factors Discourage Cycling ?

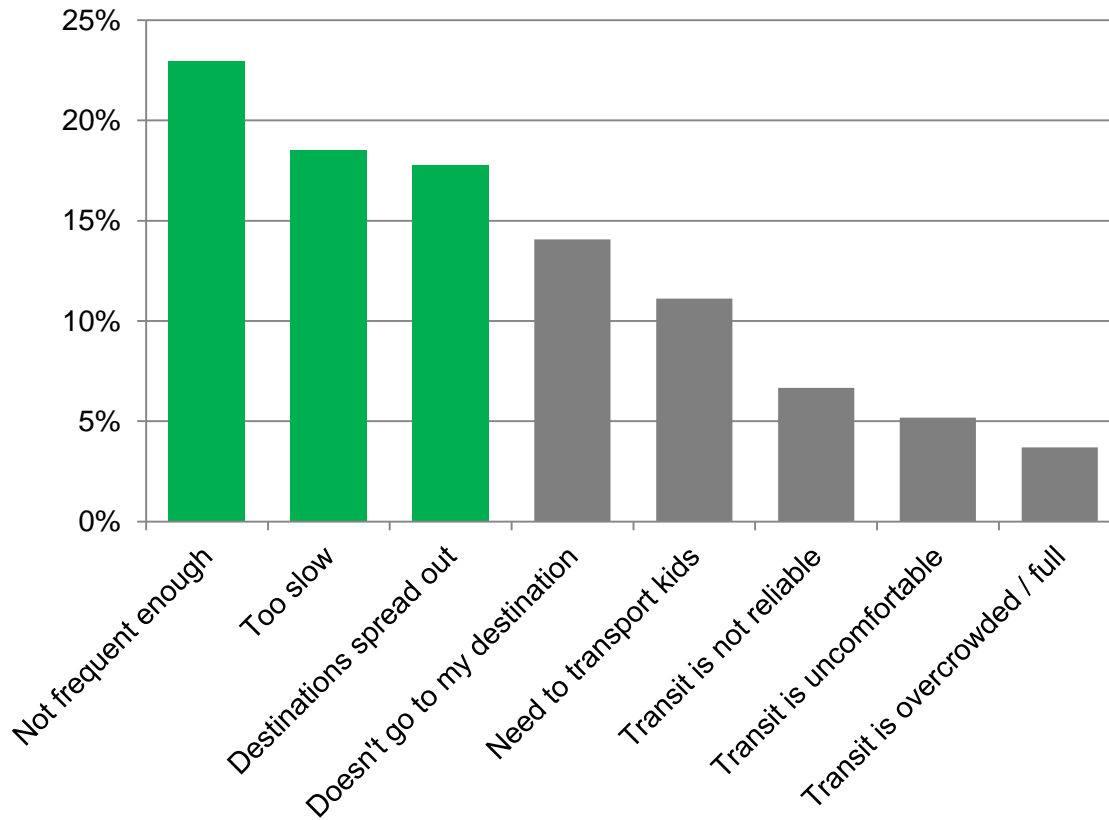


- **Traffic safety** (i.e. volumes and speeds) identified as the main deterrent to cycling



Barriers to Transit

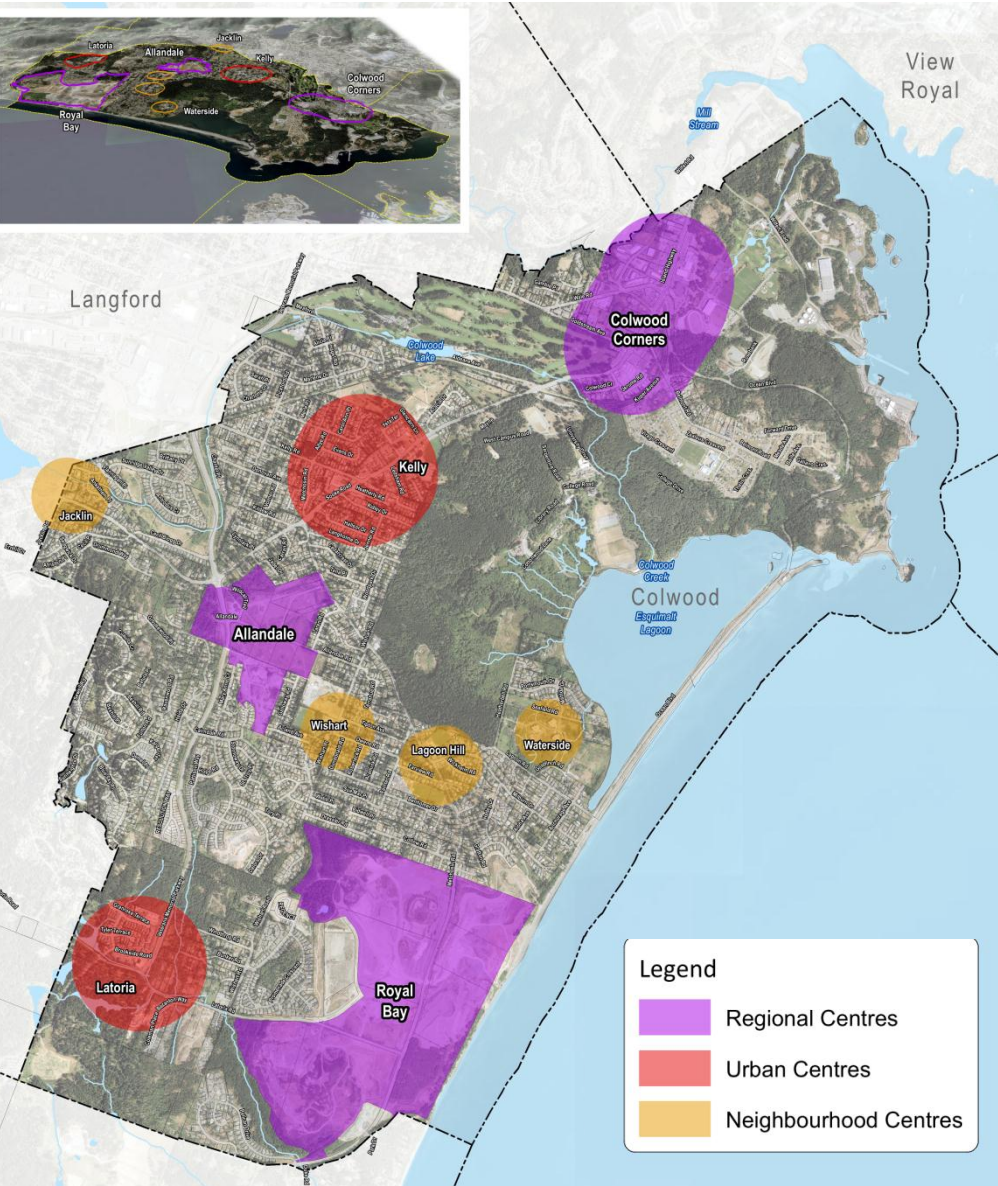
What Factors Discourage Transit?



- **Infrequent transit service** identified as the main deterrent
- **Speed** of transit service not seen as competitive with other mode, and **destinations are too far** to make transit use attractive



Transportation Plan Framework



Network of Centres

Regional Centres

- Capital City Centre
- Allandale
- Royal Bay

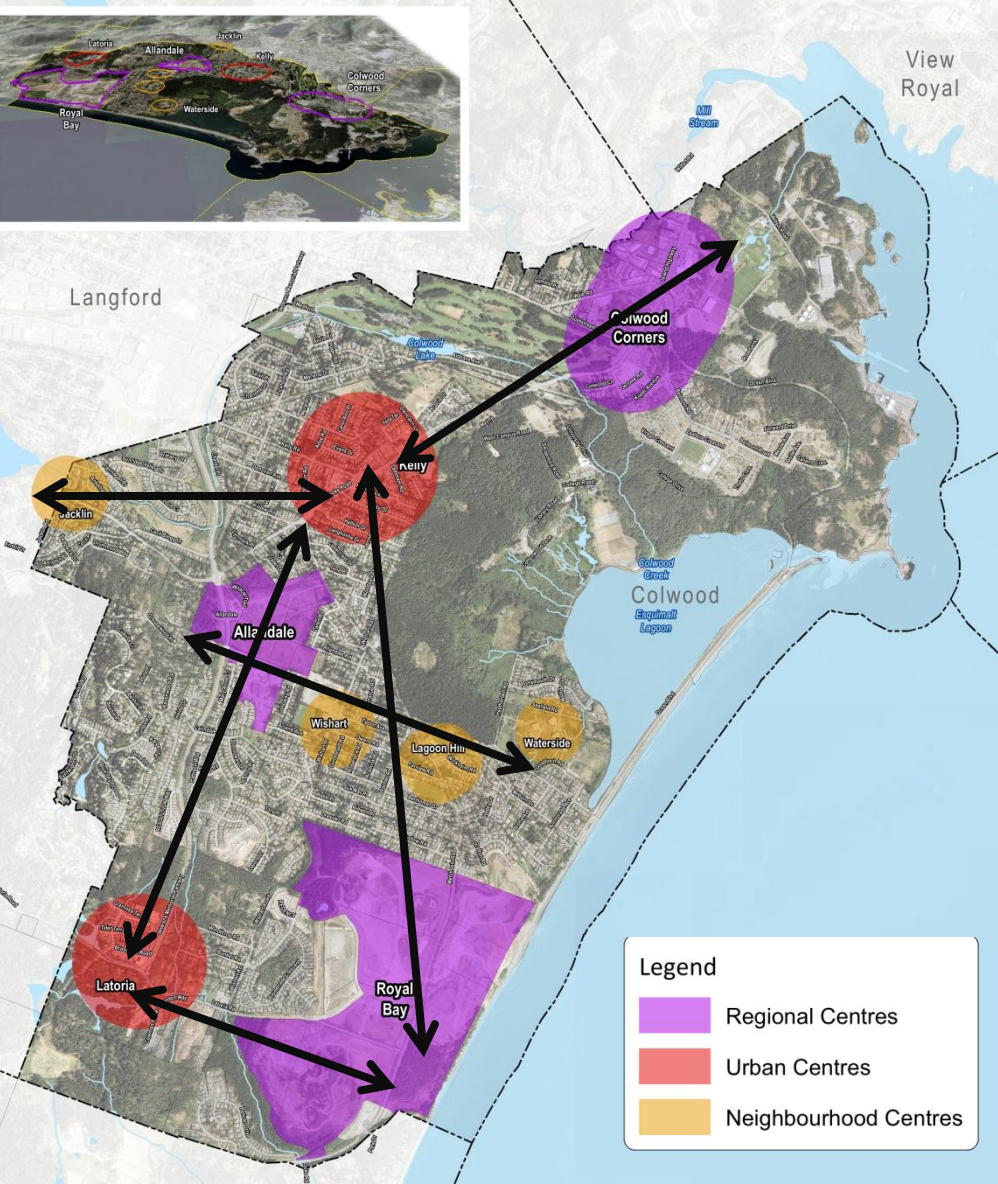
Urban Centres

- Latoria
- Kelly

Neighbourhood Centres

- Jacklin, Wishart, Lagoon Hill, Waterside

Transportation Plan Framework



Network of Centres

Regional Centres

- Capital City Centre
- Allandale
- Royal Bay

Urban Centres

- Latoria
- Kelly

Neighbourhood Centres

- Jacklin, Wishart, Lagoon Hill, Waterside