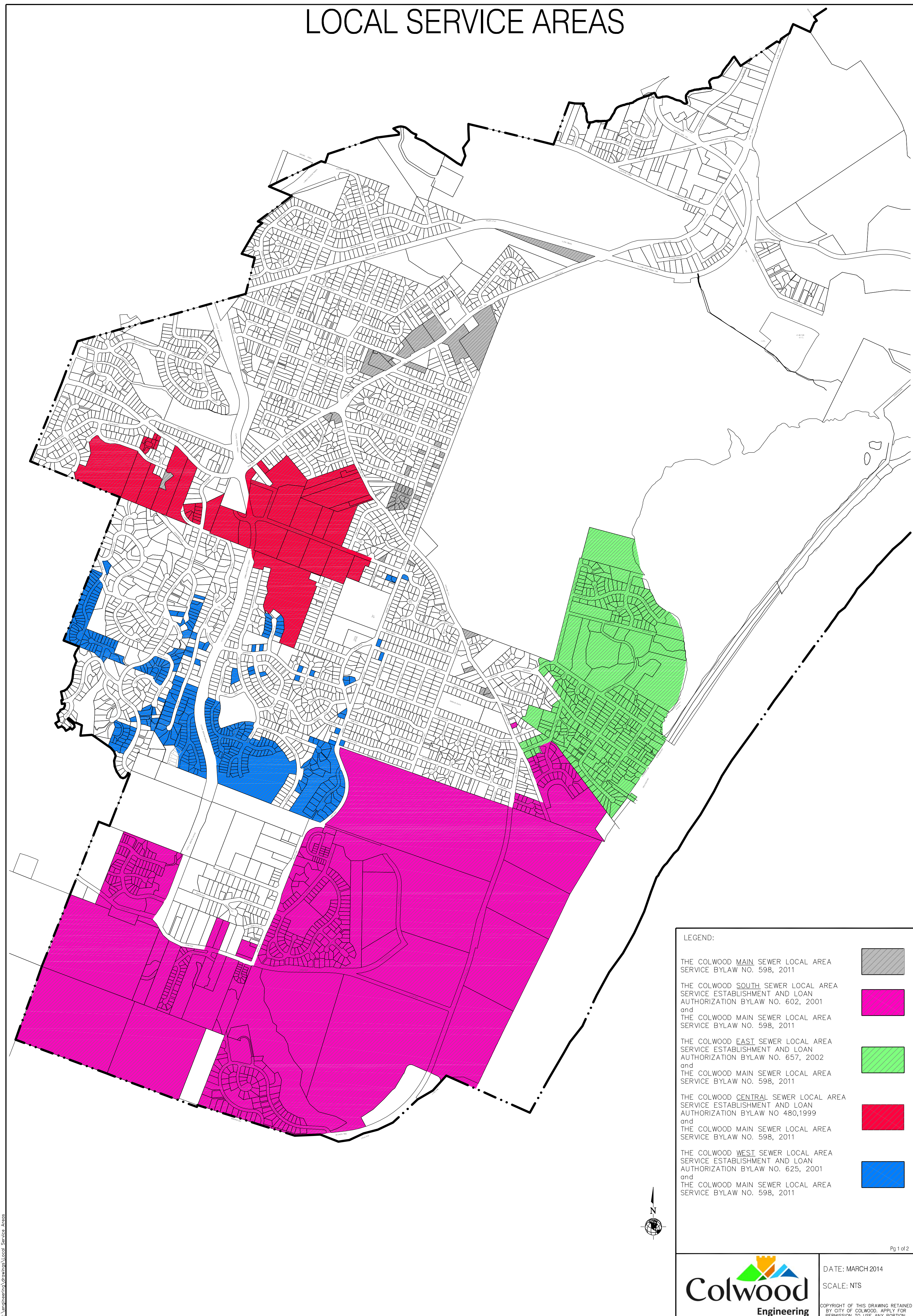


Colwood Local Service Areas



W:\colwood\engineering\local service areas

DATE LAST PRINTED:

Options for connecting to sewers

options

Property owners adjacent to the new sewer line will have the following options:

- ▶ *If the petition goes ahead and property owners join the Central LAS, they will pay an annual sewer tax of about \$500, and may decide to connect to sewers immediately or at some point in the future.*
- ▶ *If the petition process does not go ahead and property owners do not join the Central LAS, then owners will not be able to connect to sewers without a further petition process, and will not be charged for anything.*

Petition process initiated by the City

petition process

- ▶ The City will send out petition letters to start the process.
- ▶ The City must also advertise the petition twice in the local paper.
- ▶ You will have a 30 day deadline for responding to the petition.
- ▶ The City will inform all property owners of the result by letter.
- ▶ The annual sewer costs will be added to taxes starting in 2017.

Cost to connect to sewers

costs

- ▶ \$9100 is the typical cost for the City to create a connection from the sewer to the property line.
- ▶ \$3000 - \$5000 is the usual cost for a homeowner to connect from the property line to their home, and decommission their septic system.
- ▶ If the City knows all properties will be signing on, connections to properties can be built when the sewer is constructed, which may result in savings.

What actions do you need to take?

actions

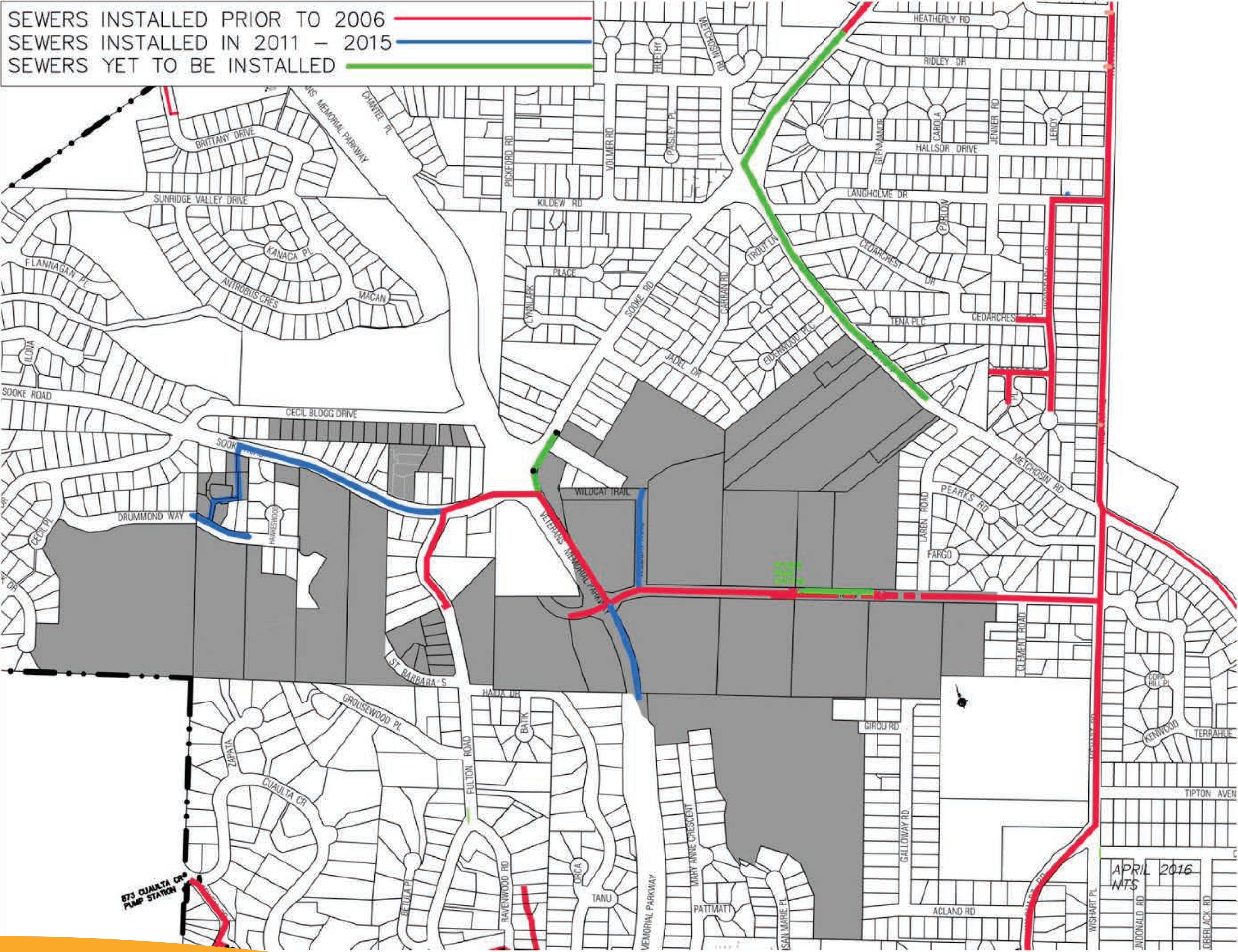
- ▶ The City will send you a petition letter.
- ▶ If you DO NOT want to be part of the LAS sewer connection - sign the petition to say NO.
- ▶ If you DO want to be part of the LAS sewer connection - you do not need to do anything.
- ▶ Majority rules. Everyone is in, or everyone is out.

Map of existing sewers in the Central LAS



APRIL 2016
NTS

Map of sewers to be constructed



Map of LAS Expansion Area

